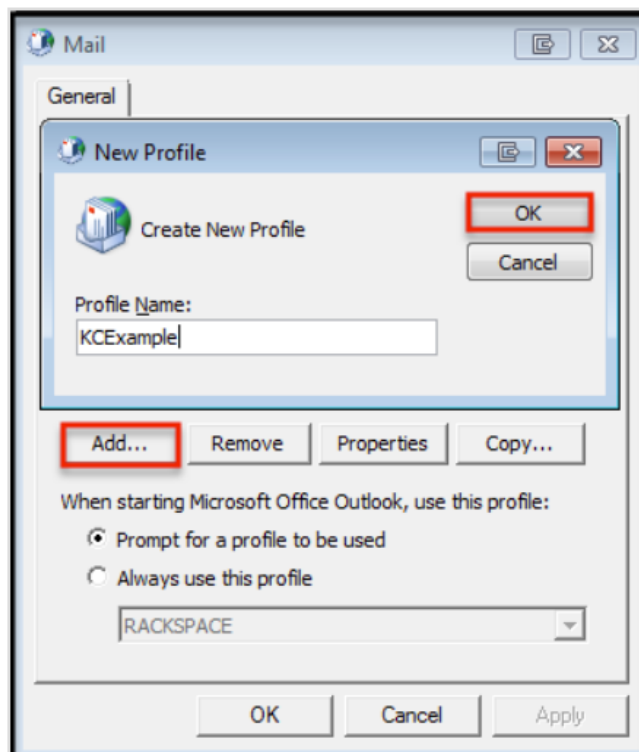
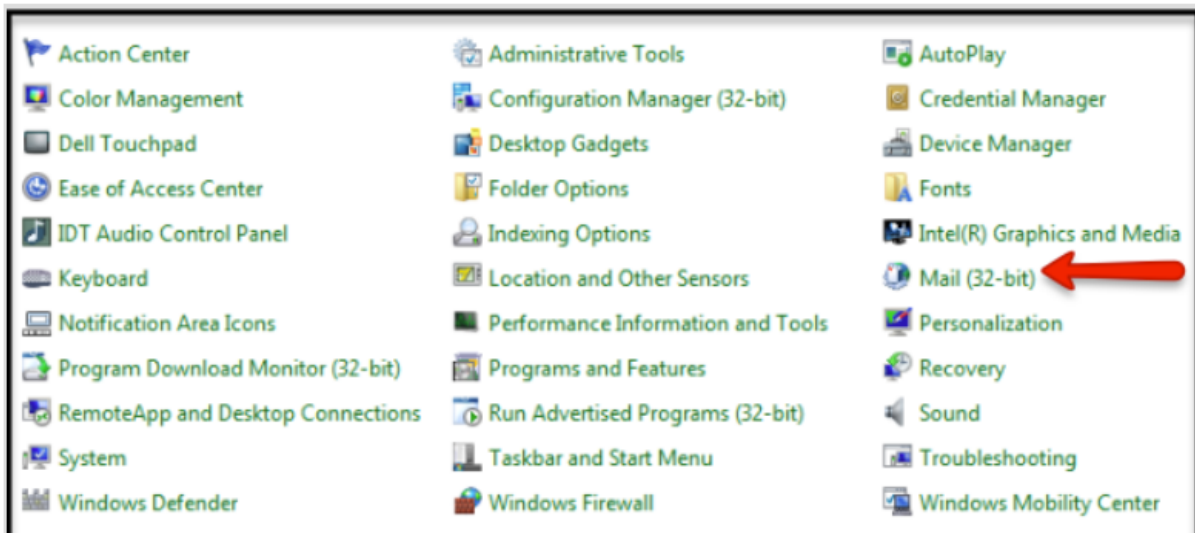


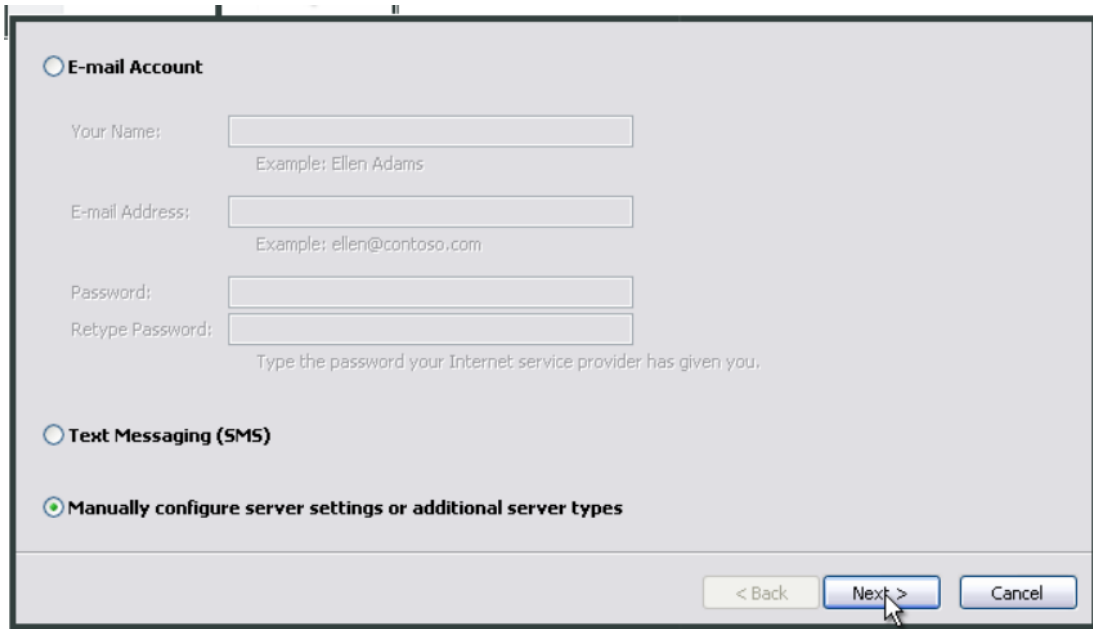
Uputstvo za instalaciju Outlook-a UDG

1. Dodavanje novog account-a preko Mail-a (Control Panel)

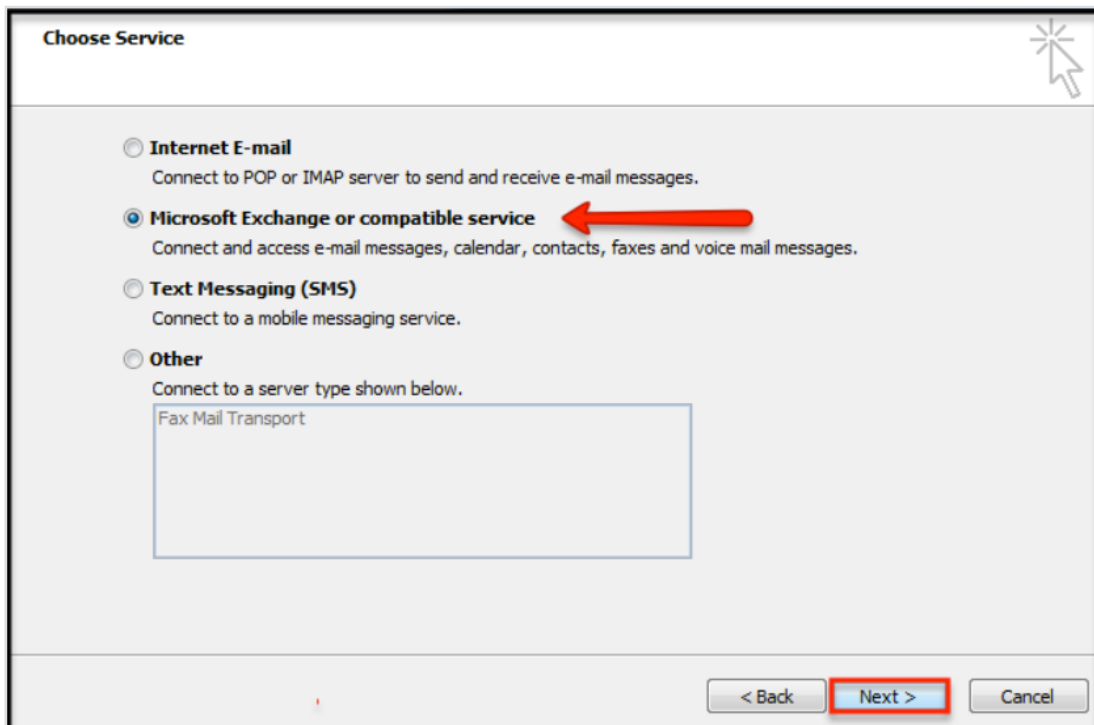


Ovaj korak se može preskočiti startovanjem Outlook aplikacije.

2. Dodavanje novog naloga preko Outlook aplikacije



The screenshot shows the 'E-mail Account' setup window. It has three radio button options: 'E-mail Account' (selected), 'Text Messaging (SMS)', and 'Manually configure server settings or additional server types'. The 'E-mail Account' section contains four input fields: 'Your Name:' with an example 'Ellen Adams', 'E-mail Address:' with an example 'ellen@contoso.com', 'Password:', and 'Retype Password:' with a note 'Type the password your Internet service provider has given you.' At the bottom right are three buttons: '< Back', 'Next >', and 'Cancel'. A mouse cursor is pointing at the 'Next >' button.




The screenshot shows the 'Choose Service' window. It has four radio button options: 'Internet E-mail', 'Microsoft Exchange or compatible service' (selected and highlighted with a red arrow), 'Text Messaging (SMS)', and 'Other'. The 'Internet E-mail' option has a description 'Connect to POP or IMAP server to send and receive e-mail messages.' The 'Microsoft Exchange or compatible service' option has a description 'Connect and access e-mail messages, calendar, contacts, faxes and voice mail messages.' The 'Text Messaging (SMS)' option has a description 'Connect to a mobile messaging service.' The 'Other' option has a description 'Connect to a server type shown below.' Below the 'Other' option is a text box containing 'Fax Mail Transport'. At the bottom right are three buttons: '< Back', 'Next >' (highlighted with a red box), and 'Cancel'. A mouse cursor is pointing at the 'Next >' button.

Add New Account


Server Settings
Enter the information required to connect to Microsoft Exchange or a compatible service.


Type the server name for your account. If you don't know the server name, ask your account provider.

Server: 

☒ Use Cached Exchange Mode

Type the user name for your account.

 User Name:



Microsoft Exchange

General Advanced **Security** Connection

Encryption
☒ Encrypt data between Microsoft Outlook and Microsoft Exchange

User Identification
☐ Always prompt for logon credentials

Logon network security:
Negotiate Authentication

